

# NOBLE 3032

## 1.28 GPF SENSOR OPERATED CONCEALED FLUSH VALVE FOR WC

### SPECIFICATIONS

Touch free electronic flush valve for water closet. Solid brass valve body with heavy-duty 10" x 7" stainless steel AISI316 panel complete with tamper proof screws for increased vandal protection. Automatic infrared sensor activated by self-adjusting detection range, includes a 6 second delay-in time to avoid unwanted flushing. Features a manual or piezo override push button anti-block feature. Concealed flush valve with 1" angle stop and 1.5" vacuum breaker set. Includes an adjustable tail piece connection and self-cleaning piston mechanism complete with debris screen and solenoid valve. Powered by a 6 x 1.5V batteries or 9V transformer. Flushing duration and other settings adjustable by remote control. ADA Compliant. Standard: ASSE 1037-1990 and CSA B125.3-2012.

### PRODUCT AT A GLANCE

Installation	Concealed flush valve with 1" angle stop and 1.5" vacuum breaker set
Recommended Pressure	0.1-8.0 bar / 14.50-116 PSI
Power Supply	6 x 1.5V Batteries or 9V transformer
Panel	Heavy-duty 10" x 7" stainless steel AISI316 panel complete with tamper proof screws for increased vandal protection.
Connection	Spud coupling and flange for top or rear spud connection
Automatic Hygiene Flush	Optional feature after 24 hours of inactivity
Piston valve	Self cleaning with 360° filter screen
Override Feature	Manual button or Piezo touch with anti-block feature
Flush cycle	1.28 GPF

### ORDERING INFORMATION

MODEL	CODE	POWER	ADDITIONAL FEATURES
NOBLE 3032	460700	6 x 1.5V Batteries	Manual override push button anti-block feature.
NOBLE 3032 E	460710	9V transformer	
NOBLE 3032 P	460720	6 x 1.5V Batteries	Piezo override push button anti-block feature.
NOBLE 3032 PE	460730	9V transformer	

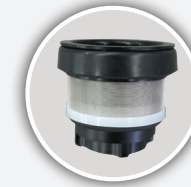
### OPTIONS

OPTION	CODE
Remote control	07100005



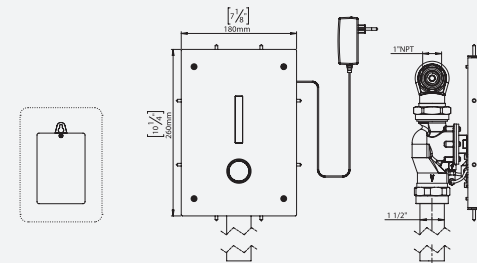
NOBLE 3032

NOBLE 3032 P

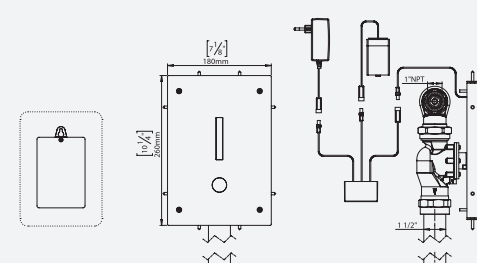


PISTON VALVE

NOBLE 3032 / NOBLE 3032 E



NOBLE 3032 P / NOBLE 3032 PE



**stern**  
STERN ENGINEERING LTD.



LEED RATING



ADA DESIGNED



HYGIENE FLUSH



MAXIMIZES HYGIENE



GERM FREE



ROBUST BRASS BODY



ADJUSTABLE SETTINGS



EASY TO INSTALL



777 Passaic Avenue  
Clifton NJ, 07012  
USA: sternusa@sternfaucets.com  
International: info@sternfaucets.com  
Toll Free: 1-800-4364410  
www.sternfaucets.com