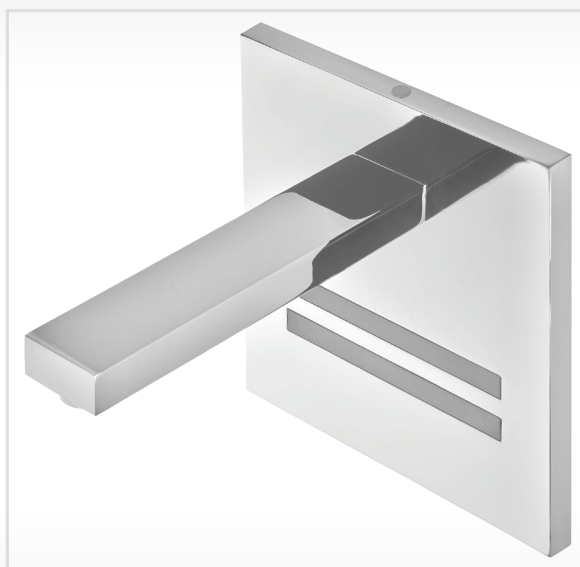


INSTALLATION AND MAINTENANCE GUIDE

NARA Q

ELECTRONIC FAUCET FOR URINALS



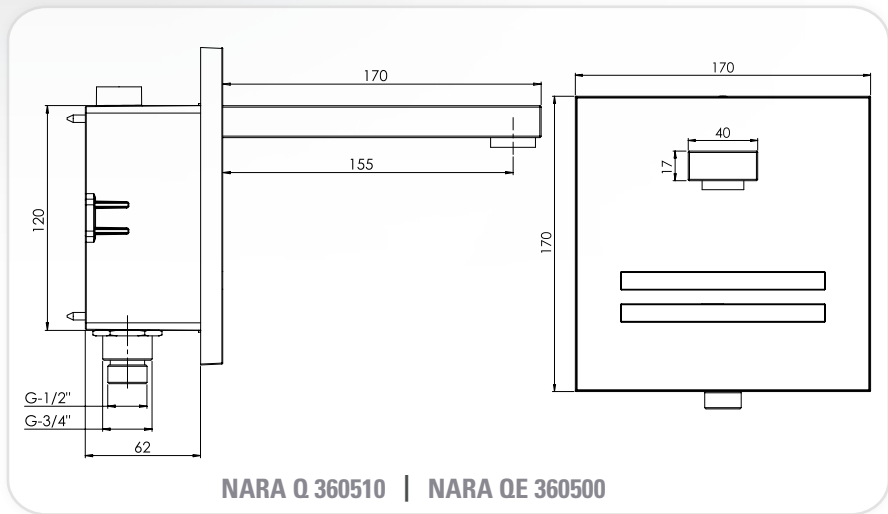
stern

STERN ENGINEERING LTD.

INDEX

- 1** TECHNICAL DATA
- 2-3** PACK CONTENTS
- 4** PRE-INSTALLATION INFO
- 5-9** FAUCET INSTALLATION
- 10-12** SETTINGS ADJUSTMENT
 - Adjusting the sensor range with a remote control
 - Adjusting the sensor range
- 13** BATTERY REPLACEMENT
- 14** MAINTENANCE
 - Filters cleaning instructions
 - Care and cleaning of chrome and special finishes
- 15** SPARE PARTS
- 16** LIMITED WARRANTY
- 17** TROUBLE SHOOTING

TECHNICAL DATA

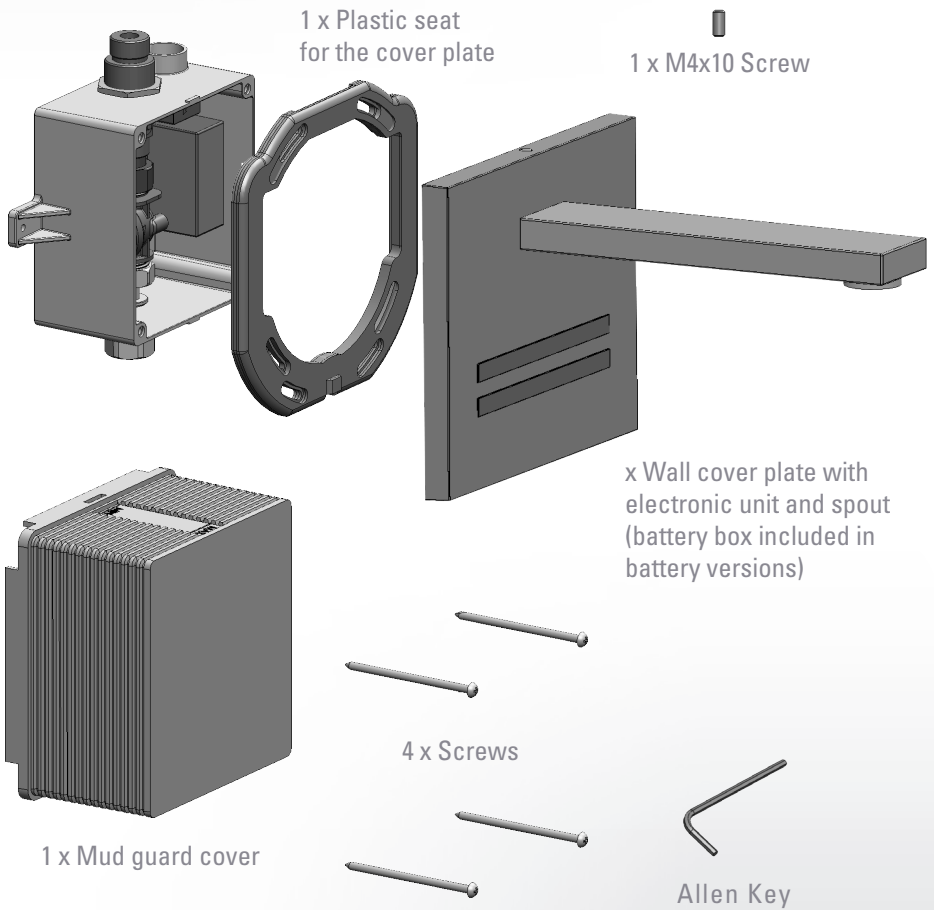


Power Supply:	9V battery or 9V switching transformer
Operating water pressure:	0.5-8.0 bar.
Sensor range:	220 mm. Adjustable
Minimum sensor range:	80 mm
Maximum sensor range:	300 mm
Security time:	90 seconds. Can be reduced with the remote control.
Hot water temperature:	Max 70°C

PACK CONTENTS

Familiarize yourself with the part names and confirm that the parts are included:

1 x Box assembly with
concealed faucet (*switching
transformer included in
electronic versions*)



PRE-INSTALLATION INFO

CHECK CONTENTS

Separate all parts from packaging and check each part with the pack contents section.

Make sure all parts are accounted for before discarding any packaging material. If any parts are missing, do not attempt to install the electronic faucet until you obtain the missing parts.

WARNINGS

Do not install the system facing a mirror or any other electronic system operated by an infra-red sensor.

To prevent reflection problems, it is recommended keep a minimum distance of 1.50 meters between the faucet and other objects.

PREPARATION FOR INSTALLATION

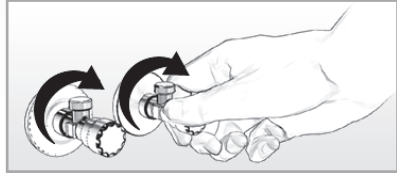
Flush water supply lines thoroughly before installing the faucet. Do not allow dirt, Teflon tape or metal particles to enter the faucet.

All plumbing is to be installed in accordance with applicable codes and regulations.

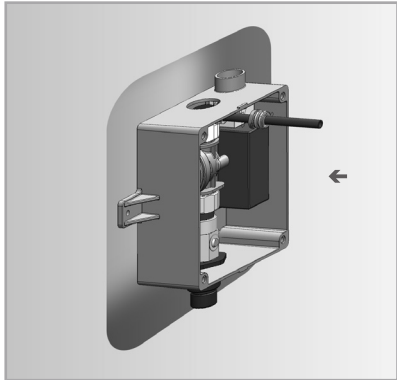
INSTALLATION

STEP 1 – INSTALLING THE FAUCET

1 Shut off the water supply.

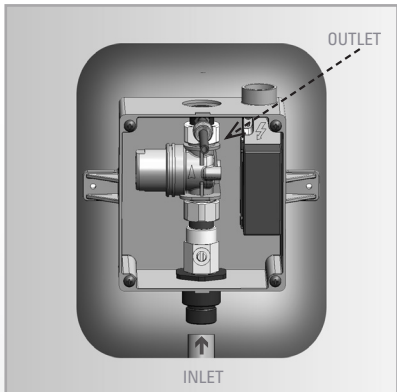


2 Cut an adequate opening in the wall for the dimensions of the box.



3 Insert the box through the opening.

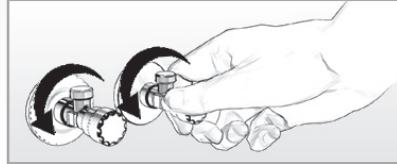
4 Connect the inlet to the water supply.



INSTALLATION

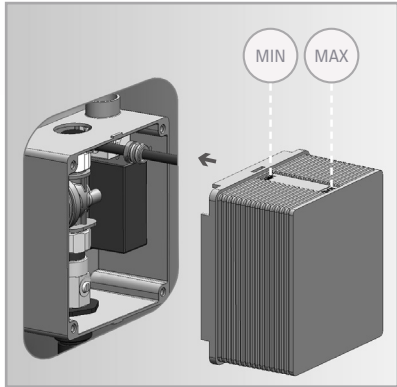
5

Turn on the water supply. Make sure there is no leakage.



6

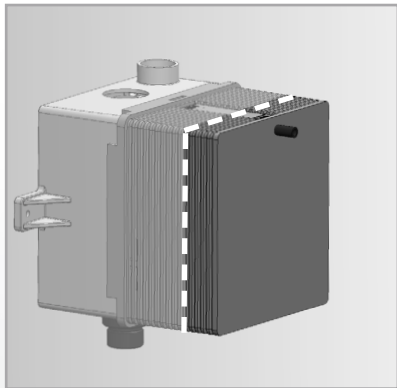
Assemble the mud guard cover to protect the solenoid valve.
Note the MIN and MAX marks on the box.



STEP 2 – CONNECTING THE WATER SUPPLY AND THE POWER SOURCE

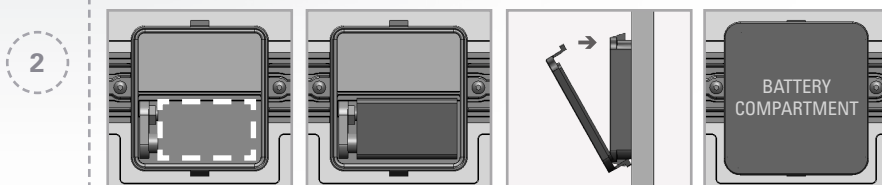
1

Once the electricity, plumbing and tile works are finished, cut the mud guard cover wherever required by the installation.

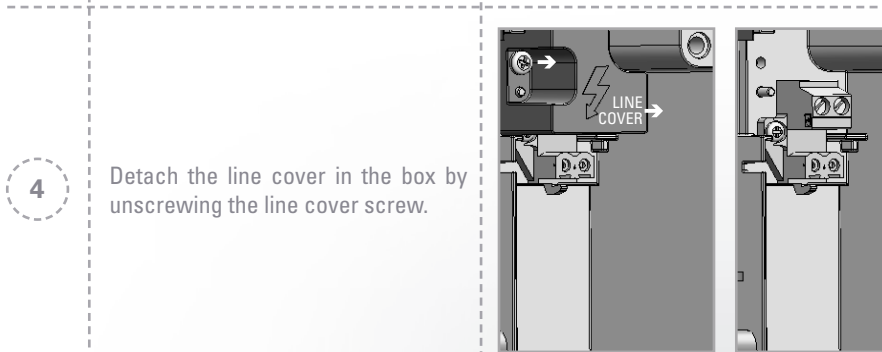
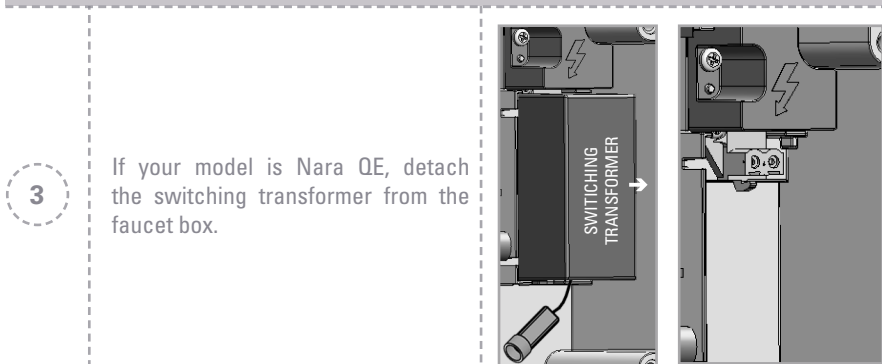


INSTALLATION

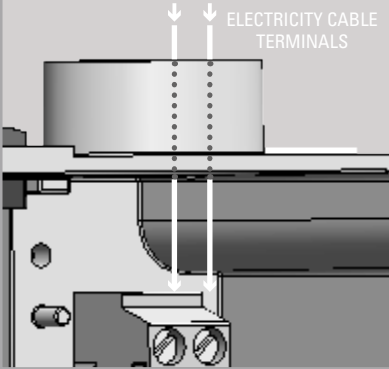
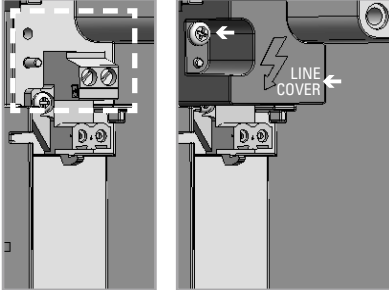
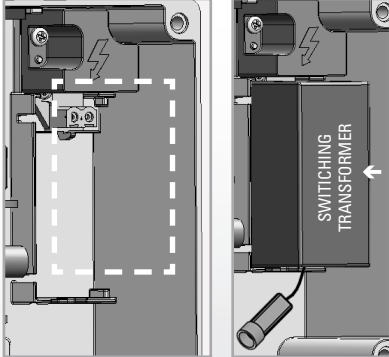
If your model is Nara Q, assemble the battery into its compartment in the wall cover plate, close the battery compartment and proceed to clause 8.



IMPORTANT: CLAUSES 3-7 ARE TO BE EXECUTED BY AN AUTHORIZED ELECTRICIAN ONLY



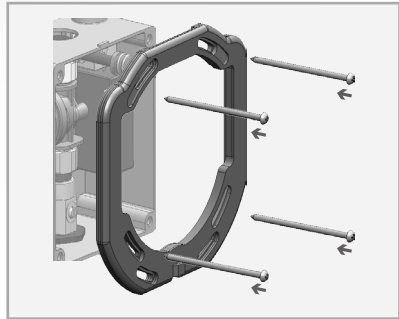
INSTALLATION

<p>5</p>	<p>Connect the electricity cable terminals.</p>	 <p>ELECTRICITY CABLE TERMINALS</p>
<p>6</p>	<p>Reattach the line cover and fasten the line cover screw.</p>	 <p>LINE COVER</p>
<p>7</p>	<p>Reattach the switching transformer into its location in the box.</p>	 <p>SWITCHING TRANSFORMER</p>

INSTALLATION

8

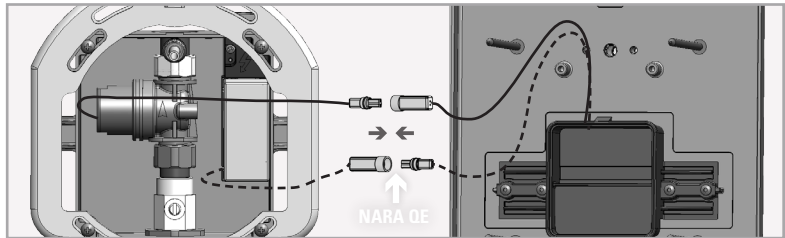
Assemble the plastic seat for the wall cover plate using the four screws provided.



9

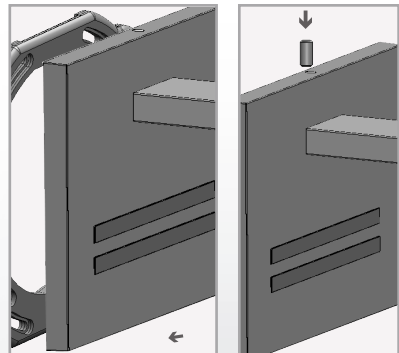
Connect the electronic unit connector that leads to the solenoid valve to the solenoid connector.

For **Nara QE** models only: Connect the other electronic unit connector to the switching transformer connector.



10

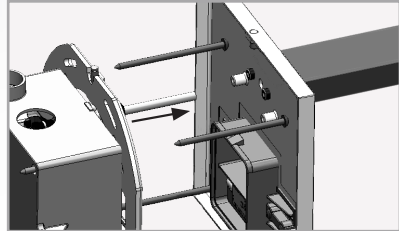
Assemble the panel to the cover seat and tighten it with the top screw.



INSTALLATION

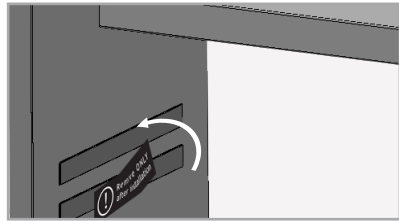
11

Make sure that the 6mm water outlet pipe is inserted into the faucet spout located in the panel.



12

Now, remove the protecting sticker that covers the sensor.



IMPORTANT: WAIT A FEW SECONDS BEFORE ACTIVATING THE FAUCET TO AVOID ENTERING INTO "ADJUSTING MODE".

IF THE RANGE IS UNSATISFACTORY, REFER TO THE SECTION ENTITLED "SETTINGS ADJUSTMENT"

SETTINGS ADJUSTMENT WITH REMOTE CONTROL



Adjusting the settings with the remote control

If necessary, the sensor settings can be adjusted as following:

Shut off the water supply. In order to adjust the sensor with the remote control, hold the remote control straight in front of the sensor in a distance of about 6-8" (15-20cm). Choose the function you want to adjust by pressing once on one of the function buttons. After pressing once on a specific function button, a quick flashing of the red light at the front of the sensor will occur. At this stage, you can change the setting by pressing the (+) or the (-) buttons, every push will increase or decrease one level. After finishing the adjustment, turn the water supply back on.



DETECTION RANGE: The sensor range is the greatest distance that an object can be away from the sensor to activate the faucet. The sensor is factory preset.

To adjust the sensor range press + to increase detection range and – to decrease the detection range of the sensor.

SETTINGS ADJUSTMENT WITH REMOTE CONTROL



SECURITY TIME: The Security time, prevents continuous flushing of water due to reflections or vandalism. By default, if the sensor is covered for more than 90 seconds the water flow will shut automatically. To resume regular operation any obstruction must be removed.

Press the SEC button. Wait until a quick flashing of the red light of the sensor eye is perceived. Then, press + to increase the security time and – to reduce it.



DELAY IN TIME: It is recommended to change the delay in time for flush valves for urinals or toilets only.

If required, the delay in time can be modified also in faucets as follows:

Press the IN button. Wait until a quick flashing of the red light of the sensor eye is perceived. Then, press + to increase the delay in time and – to reduce it.



DELAY OUT TIME: This button allows modifying the water flow time after the user removes his hands from the faucet. A delay out time close to 0 will save more water. An increased delay out time will make the user experience more comfortable.

If required, the delay out time can be modified as follows: Press the OUT button. Wait until a quick flashing of the red light of the sensor eye is perceived. Then, press + to increase the delay out time and – to reduce it.



TEMPORARY OFF FUNCTION: This function is ideal to perform any kind of activity in front of the sensor without operating the system (for example, cleaning).

Faucets will remain shut for 1 minute when this button is pressed once. To cancel this function and to return to normal operation press the On/Off button again or wait 1 minute.



RESET BUTTON: This function allows the sensor to return to the original factory preset settings.

If required, press the Reset button and without releasing it, press the + button once.

RANGE ADJUSTMENT

The sensor range is the range an object can be away from the sensor in order to activate the faucet. The sensor is factory preset. If necessary, it can be adjusted as follows:

Adjusting the sensor range manually:

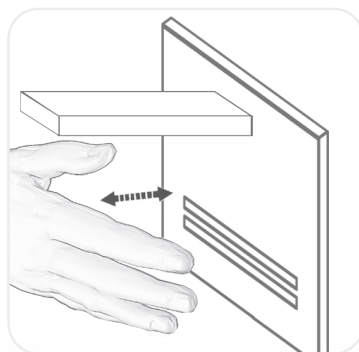
1. Disconnect the battery or switch off the electricity supply to the sensor.
2. For Nara Q, make a short circuit between the (+) and the (-) connections of the sensor. A screw driver or any conductive material can be used to make this short circuit. Alternatively and for Nara QE, activate the sensor three or four times after disconnecting the power supply.

Do not make a short circuit on the power supply or on the sensor when the power supply is connected to the sensor.

3. Reconnect the power supply to the sensor.
4. To enter into the adjusting mode, put your hand in front of the sensor at a distance of 2" (5cm) within 5 seconds from the re-connection of the power supply.

Note: If you will not put your hand in front of the sensor after connecting the power supply, the sensor will not enter into the adjusting mode and the previous adjustment will continue.

5. When the sensor enters into the adjusting mode and your hand is in front of the sensor, the red light in front of the sensor will flash slowly.
6. Keep your hand in front of the sensor until the slow flashing changes to quick flashing, At this point move your hand to the required distance from the sensor and wait until the red light will stop flashing.
7. When the red light has turned off, the sensor is adjusted to the required distance.
8. Check the distance you have set and if it is not satisfactory, repeat the procedure.

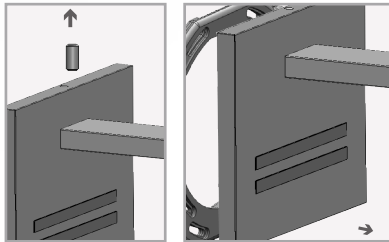
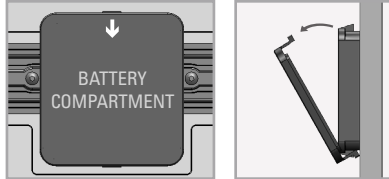
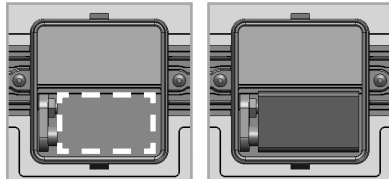
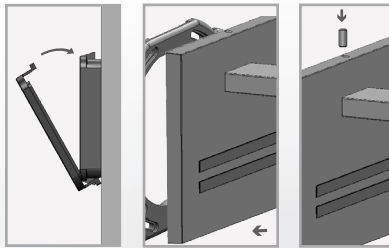


BATTERY REPLACEMENT

Battery replacement instructions – **Nara Q only**

When the battery weakens, the red indicator light will blink at a constant rate. The battery must be replaced within two weeks.

To replace the battery:

<p>1</p>	<p>Release the screw at the top of the cover plate and remove the cover plate.</p>	
<p>2</p>	<p>Open the battery compartment located at the back of the cover plate.</p>	
		
<p>3</p>	<p>Replace the used battery with a new 9V battery (Lithium battery is recommended).</p>	
		
<p>4</p>	<p>Close the battery compartment and refit the cover plate</p>	
		

MAINTENANCE

Filter cleaning instructions

This faucet is provided with one stainless steel filter preventing foreign particles to enter the lines. If the water flow has decreased, this can be because the filter is clogged. The filter can be cleaned as follows:

1. Shut-off the water shut off valve (angle valve).
2. The filter is located between the solenoid housing and the shut off valve nut.
3. Remove the filter and wash it under running water.
4. Reassemble the parts.
5. Make sure that there is no water leakage.

Care and cleaning of chrome and special finishes

DO NOT use steel wool or cleansing agents containing alcohol, acid, abrasives, or the like. Use of any prohibited cleaning or maintenance products or substances could damage the surface of the faucet. For surface cleaning of faucet use **ONLY** soap and water, then wipe dry with clean cloth or towel. When cleaning bathroom tile, the faucets should be protected from any splattering of harsh cleansers.

SPARE PARTS LIST

Panel Kit.....07040108

Sensor Kit.....07220232

Solenoid & Housing Kit.....07231010

Filter.....08530013

Switching transformer.....06522062

LIMITED WARRANTY

Y. Stern Engineering Ltd. warrants that its electronic faucets, flush valves and controls will be free of defects in material and workmanship during normal use for two years from the date the product is purchased.

If a defect is found in normal use, Y. Stern Engineering Ltd. will, at its discretion, repair, provide a replacement part or product, or make appropriate adjustments. Damage caused by accident, misuse, or abuse is not covered by this warranty. Improper care and cleaning will void the warranty. Proof of purchase (original sales receipt) must be provided to Stern Engineering Ltd. with all warranty claims.

Stern Engineering Ltd is not responsible for labor charges, installation, or other incidental or consequential costs other than those noted above. In no event shall the liability of Stern Engineering Ltd. exceed the purchase price of the faucet, valve or control.

If you believe that you have a warranty claim, contact your Stern Distributor, Dealer or Plumbing Contractor. Please be sure to provide all pertinent information regarding your claim, including a complete description of the problem, the product, model number, the date the product was purchased, from whom the product was purchased and the installation date. Also include your original invoice.

Y. STERN ENGINEERING AND/OR SELLER DISCLAIM ANY LIABILITY FOR SPECIAL, INCIDENTAL OR CONSEQUENTIAL DAMAGES. This warranty excludes product damage due to installation error, incorrect maintenance, wear and tear, battery, water composition, product abuse, or product misuse, whether performed by a contractor, service company, or the consumer. This warranty does not cover product damage caused by the following:

- Incorrect installation, inversions of supply pipes.
- Pressures or temperatures exceeding recommended limits.
- Improper manipulation, tampering, bad or lapsed maintenance.
- Foreign bodies, dirt or scale introduced by the water supply.

TROUBLE SHOOTING

PROBLEM	INDICATOR	CAUSE	SOLUTION
No water coming out of the faucet:	1. Sensor flashes continuously when user's hands are within the sensor's range.	Low battery.	Replace battery.
	2. Red light in the sensor does not flash once when user's hands are within the sensor's range.	1. Range is too short.	Increase the range.
		2. Range is too long.	Decrease the range.
		3. Battery is completely used up	The battery must be replaced.
	3. Red light in the sensor flashes once when user's hands are within the sensor's range.	4. Unit is in "Security Mode"*	
		5. Sensor is picking up reflections from the washbasin or another object.	Eliminate cause of reflection.
1. Connectors between the electronic unit and solenoid are disconnected.		Connect the electronic unit connectors to the solenoid.	
2. Debris or scale in solenoid.		Unscrew solenoid, pull out the plunger and the spring from the solenoid and clean them. Use scale remover material if needed. When replacing the plunger, please make sure that the spring is in vertical position.	
3. The central orifice in the diaphragm is plugged or the diaphragm is torn		Clean the orifice or replace diaphragm.	
Water flow from spout does not stop:	1. Sensor flashes once when user's hands are within the sensor's range.	4. The water supply pressure is higher than 8 bar.	Reduce the supply water pressure.
		5. The water supply pressure is under 8 bars and yet the pressure in the faucet's body is higher. This situation could be caused by a sudden increase in the water supply pressure that the backcheck prevents from dropping, even after water supply pressure drops under 8 bars.	Shut off water supply and unscrew one of the flexible pipes in order to reduce the pressure that blocks the product.
	2. Red light in the sensor does not flash once when user's hands are within the sensor's range.	Debris or scale in diaphragm	Clean the orifice or replace diaphragm.
Water flow diminished		1. Sensor is dirty or covered.**	Clean or eliminate cause of interference.
		2. Sensor is picking up reflections from the washbasin or another object.	1. Decrease the range or eliminate cause of reflection.
		Filter or aerator is clogged	Remove, clean, re-install
* "Security Mode": If the sensor is covered for more than 90 sec. the faucet will automatically shut off water flow. To return to normal operation remove any blockage.			
** In this case, the water flow will stop anyway after 90 seconds because of the security time.			

STERN

STERN ENGINEERING LTD.

15 Gan Rave Blvd., 81222 Gan Rave, Yavne, Israel

Tel: 972-8-9326000, Fax: 972-8-9326025, export@sternfaucets.com

www.sternfaucets.com



09.13 01500437