



TOTAL TOUCHLESS EXPERIENCE



stern

TOTAL TOUCHLESS EXPERIENCE



Faucets & Soap Dispensers



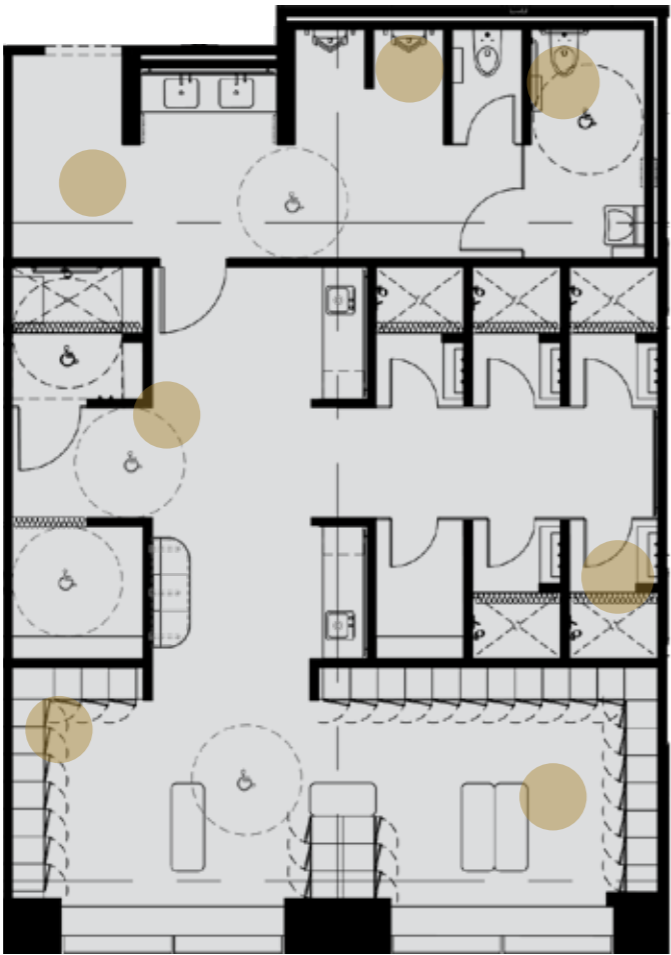
Washbasins



SWAR
Mirrored Wash
Stations



Cubicles



Shower Panels



Trio - Soap, Water,
Air Solution



WC / Urinals Flush Valves



Restricted
Access

Touchless Cubicles	4-6
Restricted Access Cubicles	7
Manual Cubicles	7
TOI - Top Occupancy Indicator	8
Vacant View Washroom Display	9
Faucets & Soap Dispensers	10-11
SWAR – Mirrored Wash Stations	12-14
Trio - Soap, Water, Air Solution	15
WC / Urinals Flush Valves	16-17
Shower Panels	18-19
Washbasins	20

“ Since 1989, Stern Engineering has been at the forefront of designing and manufacturing cutting-edge, sustainable touch-free fixtures for commercial washrooms. ”



DESIGN INNOVATION

Since 1989, Stern Engineering has been at the forefront of designing and manufacturing cutting-edge, sustainable touch-free fixtures for commercial washrooms. Being a leader in Green Building and LEED practices, using Stern's touchless faucets, soap dispensers, hand dryers, SWAR - mirrored wash stations and "Behind-The-Mirror" Technology, urinals, dual flush valves, and shower panels can help any project maximize sustainability and water conservation.

Expanding on this expertise, Stern has introduced its latest innovation: Patented Touchless Cubicles. This new product complements the Total Touchless Washroom Concept, offering seamless functionality and hygiene in every aspect of the design.

As both a manufacturer and a one-stop shop for architects, interior designers and fit-outs, Stern provides fully customizable options to meet specific project needs, ensuring flexibility and tailored solutions for any commercial space.

Understanding the importance of functional beauty, Stern maintains design consistency across the entire project, while prioritizing the user experience to create a comfortable, elegant, and sustainable environment that delivers the same sense of privacy and comfort in public washrooms as one would find at home.

Cubicles



Touchless Cubicles

Fully integrated access system that offers door control from the exterior and interior of the cubicle using hand proximity sensors. The sensor and LED indicator mechanism on the exterior of the system resembles a standard door lock. On the interior of the door, the sensor and LED indicator mechanism appear as a regular circular handle. The system runs using 15 volt electrical power using a transformer from the main power source for up to 4 cubicles together. Panels are pre-wired during manufacturing, no wiring is required during the installation.

- Floor-To-Ceiling 42mm (1.65") - thick HPL.
- Unique design that supports structural integrity and endurance.
- Seamless partitions for a smooth, clean appearance with minimal seams.
- High-quality hinges in black or anodized satin.
- Anodized satin or black aluminum profiles.
- Full chrome plated brass opening mechanism.
- Available in a variety of colors.

QUICK & EASY INSTALLATION

- Maximum precision: A provided spacer beam eliminates measuring errors.
- Panels are pre-wired during manufacturing.
- No special preparation required.
- No connection to the ceiling required.

MAXIMUM STRUCTURAL STABILITY

Although the cubicles are Floor-To-Ceiling, to give maximum privacy, the construction does not require any connections or reinforcement in the ceiling allowing for maximum stability as well as easy installation.

Technical Specifications

FLOOR-TO-CEILING CUBICLE

- Up to 3000mm (9' 10") cubicle height.
- Up to 1500mm (4' 11") - Internal measurement cubicle depth (1542mm (5' 07") - External measurement).

DOORS AND DIVIDERS/PARTITIONS

- 42mm (1.65") thick.

DOOR CLEARANCE

- 7.5mm (0.3") from the floor and 7.5mm from the top cover pilasters.

PILASTERS

- Up to 3M (9' 10").

FRAME

- Anodized aluminum 6063 with 3mm (0.118") HPL on both sides.

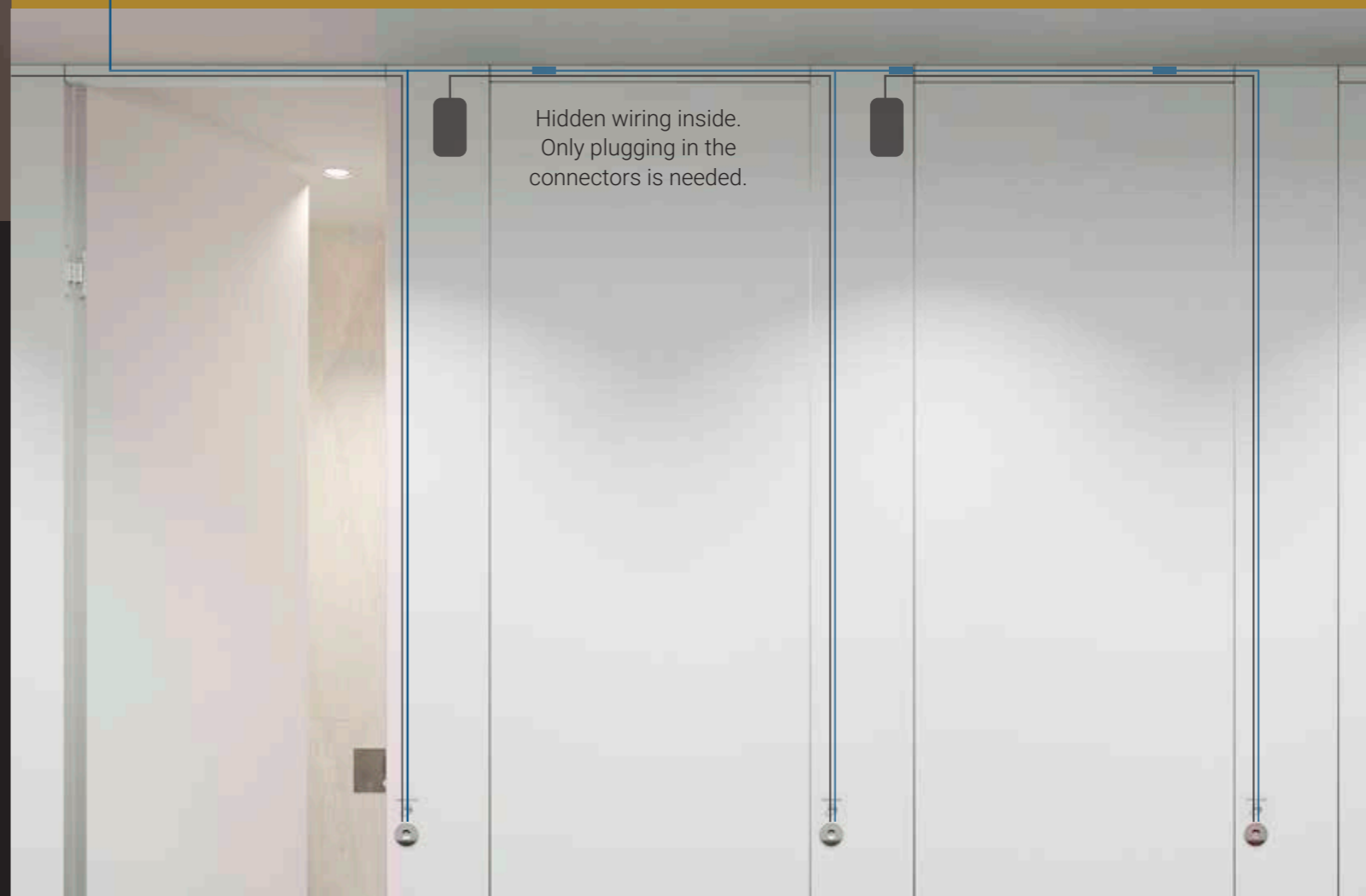
HANDLES

- Chrome plated brass. Other finishes available.

POWER SOURCE

- 15 volt transformer can power up to four cubicles from a single transformer.
- All wiring is done during the manufacturing process.
- No additional wiring is required during the installation process.

Main Power Supply



STERN'S SIGNATURE HPL COLORS



Snow White



Ivory White



Oak



Gray



Graphite



Black

* Custom finishes available upon request

Key Features



TOUCHLESS OPERATION



MANUAL OPERATION IN CASE OF POWER FAILURE



SERVICE MODE FOR CLEANING



IN CASE OF AN EMERGENCY



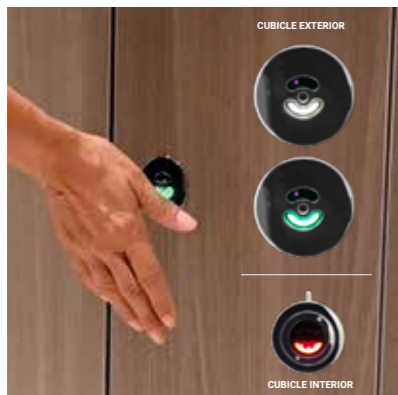
OPTIONAL COIN-RELEASE ACCESSORY



SAFETY-UNLOCK



OPTIONAL TOI – TOP OCCUPANCY INDICATOR



WHITE/GREEN LED



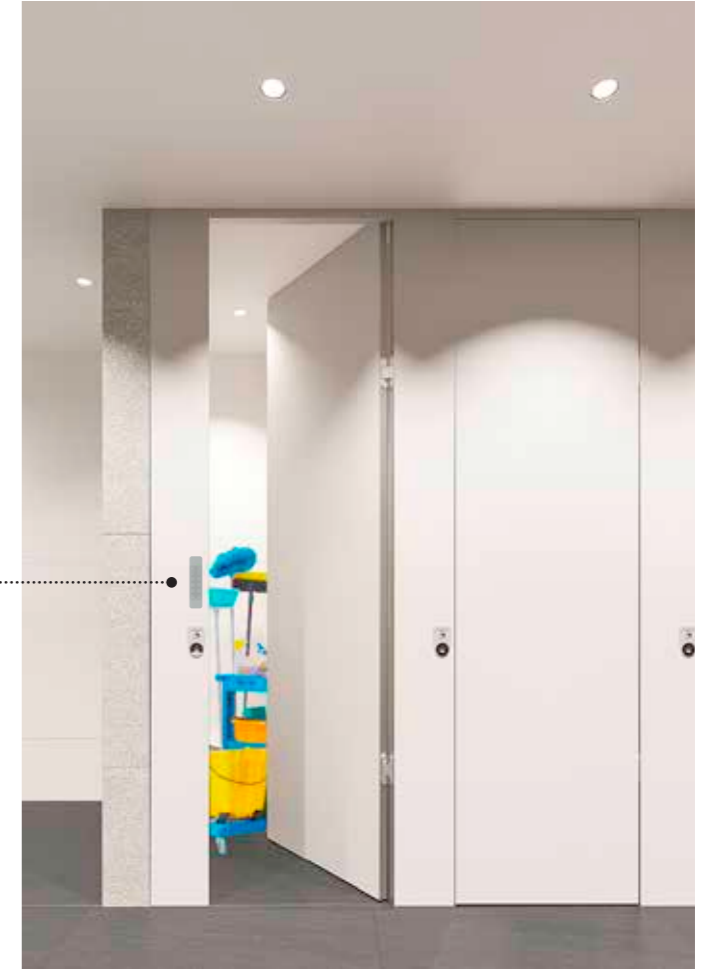
VACANTVIEW WASHROOM DISPLAY



EASY INSTALLATION AND MAINTENANCE

Restricted Access Cubicles

The Restricted Access Cubicles with an electronic keypad, provides an effective way to manage access control. These access control systems require the users to enter a unique code to unlock and open the door. Perfect for matching storage areas or locations that require secured access, the intuitive keypad access system allows janitorial and cleaning crews easy entry and exit from the cubicle.

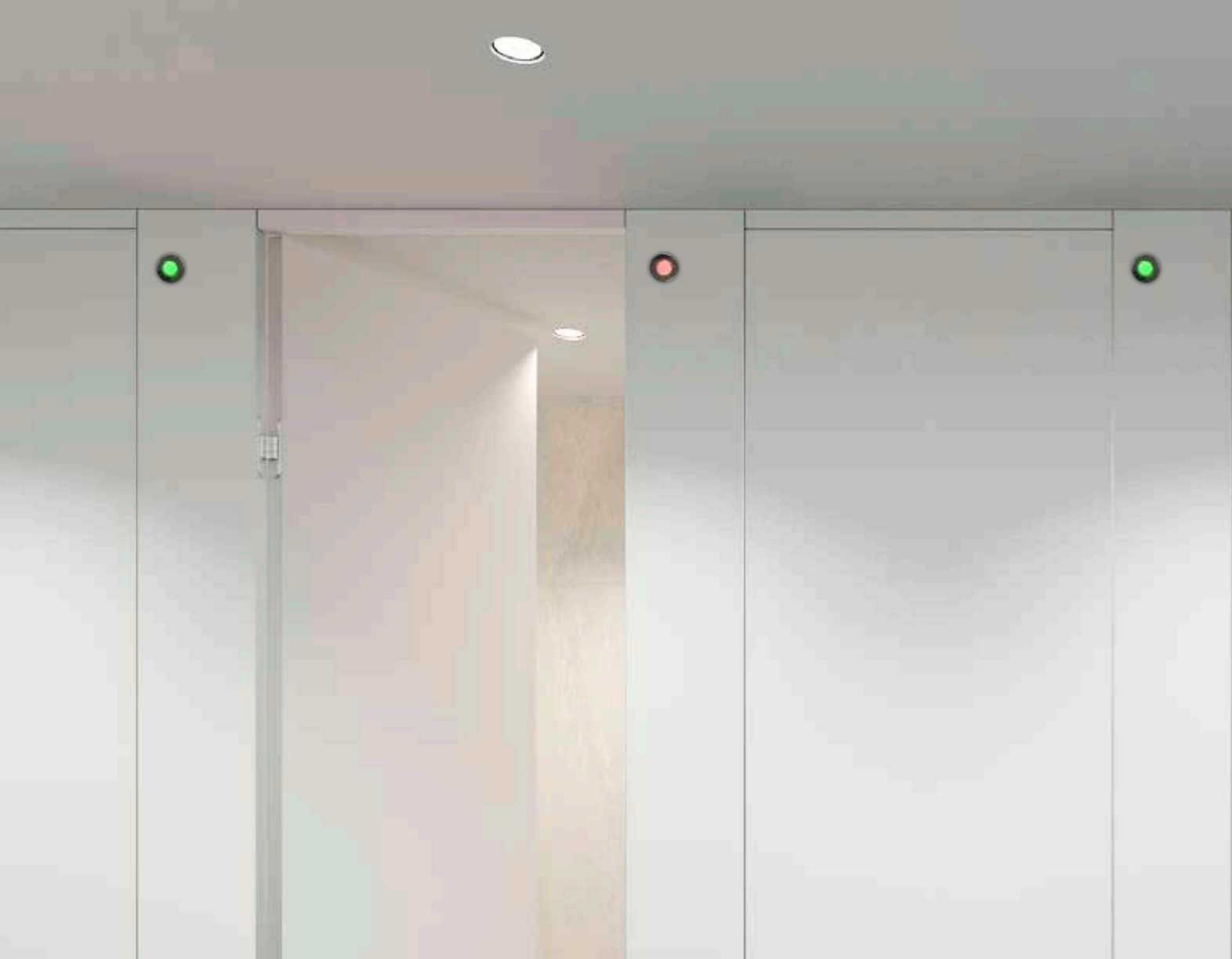


Stern's Floor-To-Ceiling Manual Option

Our durable and stylish fixtures ensures both functionality and aesthetics. Stern's Floor-To-Ceiling manual cubicles are designed to withstand heavy use while maintaining their pristine look.

- A wide, customizable selection of HPL colors
- Choice of Matte Black or Stainless-Steel handles and hardware.
- Occupancy indicators.
- Self-Closing hinges.





TOI - Top Occupancy Indicator

For high-traffic washrooms, Top Occupancy Indicators (TOI) provide clear visibility of cubicle availability from a distance, ensuring seamless traffic flow and enhancing hygiene and social distancing.

Paired with VacantView, this solution offers guests an intuitive way to check cubicle occupancy quickly and efficiently.

Together, they create a modern, user-friendly experience that promotes better crowd management and elevates customer satisfaction.



WINNING COMBINATION



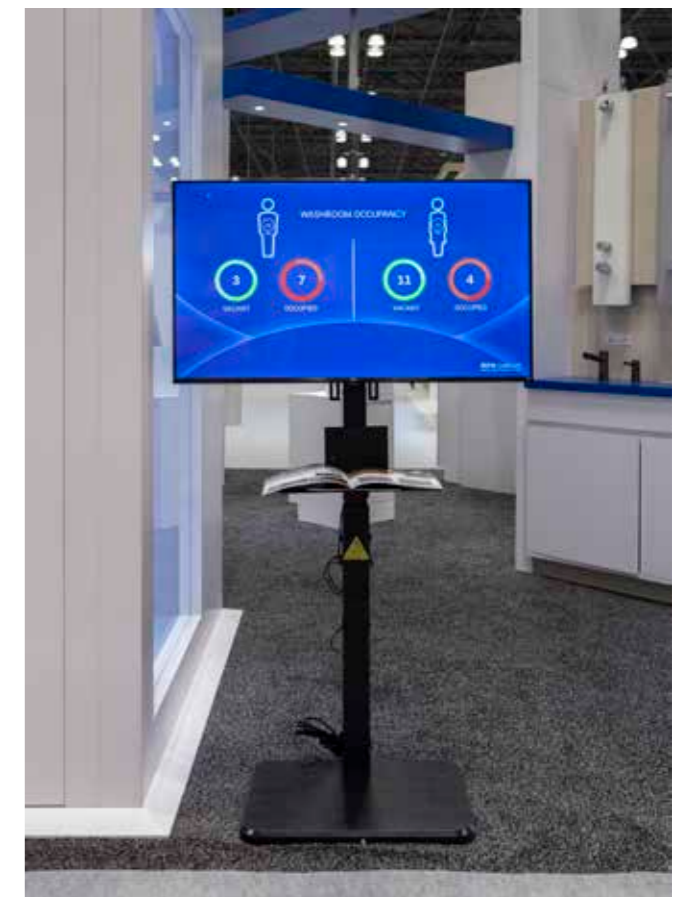
VacantView • TOI • Touchless Cubicles

VacantView Washroom Display

Stern's VacantView Washroom Display is designed to improve hygiene and reduce cross-contamination by minimizing crowding in public washrooms.

This innovative display allows users to instantly check cubicle availability, reducing wait times and preventing large groups from gathering in one area.

Ideal for high-traffic environments like airports, shopping malls, and other busy public spaces, it enhances visitor convenience and experience while promoting better traffic flow and maintaining a cleaner, safer environment.



Duo Collection

Matching Faucet and Soap Dispenser Sets



Csaba Faucet & Soap Dispenser

The Csaba Soap and Water Duo offers a seamless touch-free solution for commercial restrooms, combining a deck-mounted electronic faucet and soap dispenser with a sleek design. Featuring concealed IR sensors for a fully touch-free experience and adjustable settings, it ensures flexibility and ease of use.

The Csaba faucet supports cold, premixed, or hot and cold water, with an IP67 dual power box option that operates via 9V battery or 9V transformer for uninterrupted use.

The Csaba soap dispenser delivers liquid soap using a peristaltic pump and operates on six (6) D batteries or a 12V transformer.

Ideal for high-traffic spaces, Csaba Duo promotes hygiene, conserves water and soap, and minimizes cross contamination, making it ideal for projects where cleanliness and style are essential.



Boreal faucet & Soap dispenser

The Boreal collection's matching deck-mounted faucet and soap dispenser with IR sensor technology bring together sleek, refined design with robust, vandal-resistant features. Includes options for cold, pre-mixed and hot and cold water. Engineered for effortless installation and built to withstand the most demanding environments, Boreal ensures washrooms remain pristine while promoting water conservation. Its touch-free operation not only reduces cross-contamination but also elevates user experience, making it ideal for high-traffic locations like stadiums, transit hubs, and highway rest stops. Paired with the Boreal touch-free electronic soap dispenser, this set creates a seamless, germ-free, and fully automated washroom experience – perfect for modern projects focused on hygiene and innovation.



D28 & Tubular SD

The D28 and Tubular Soap Dispenser brings elegance and functionality to commercial restrooms with a touch-free wall-mounted faucet and matching soap dispenser. Designed for cold or premixed water, the D28 faucet operates through an infrared sensor. Programming solutions allows fine-tuning of sensor range, security timing, and more. Tubular Soap Dispenser delivers soap smoothly without dripping; maintaining a pristine environment. This dynamic duo ensures easy installation, durability, and vandal resistance, making it perfect for high-traffic environments like offices, hotels, and restaurants. They not only promote hygiene but also minimizes cross-contamination, conserving water and soap for an efficient, germ-free restroom experience.



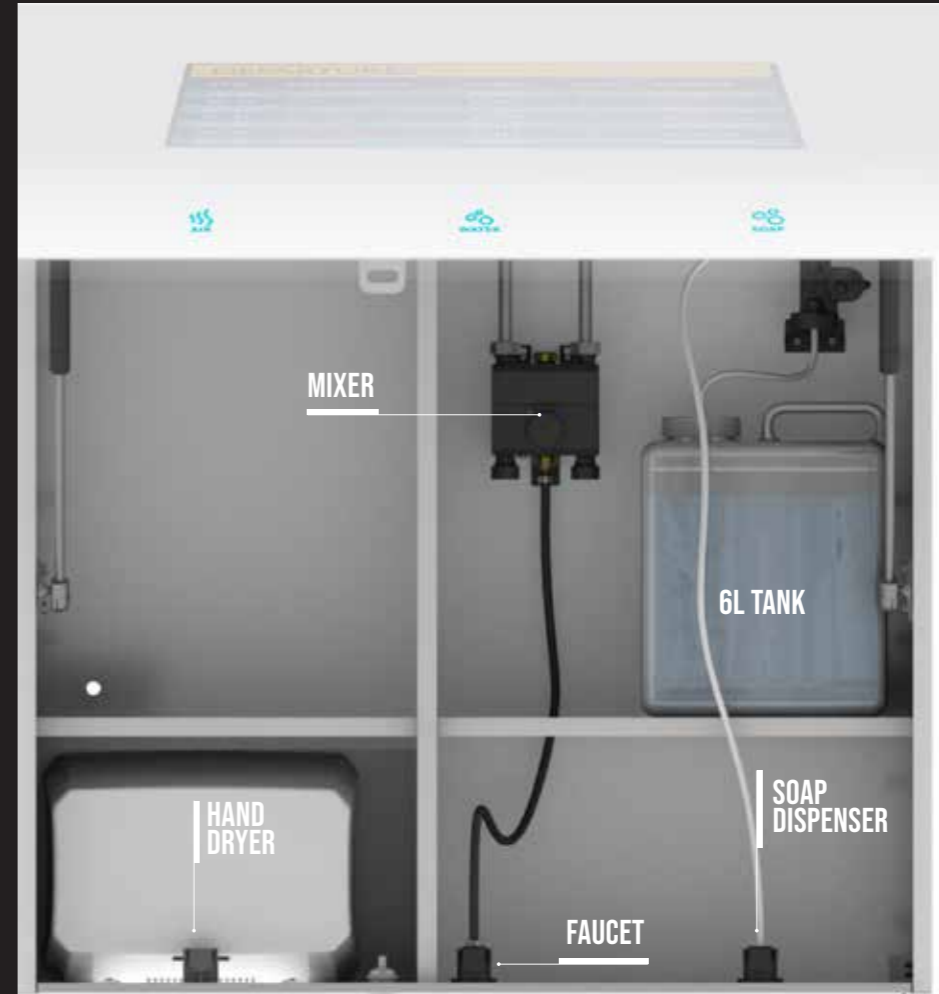
Extreme CS

The Extreme Collection offers versatile, touch-free wall-mounted faucets and soap dispensers designed for high-traffic commercial spaces. The Extreme CS faucet has a concealed IR sensor integrated into the spout for cold or premixed water. and comes with an IP67 dual power box option that operates via 9V battery or 9V transformer for uninterrupted use.

Paired with the matching wall-mounted Extreme CS Soap Dispenser makes for a winning design. Extreme CS also works off IR sensor technology and has adjustable settings. With Stainless Steel AISI 316 spout option, a peristaltic pump, and ability to use non-proprietary soap, this touch-free soap dispenser brings a hygienic and elegant solution to modern restrooms.

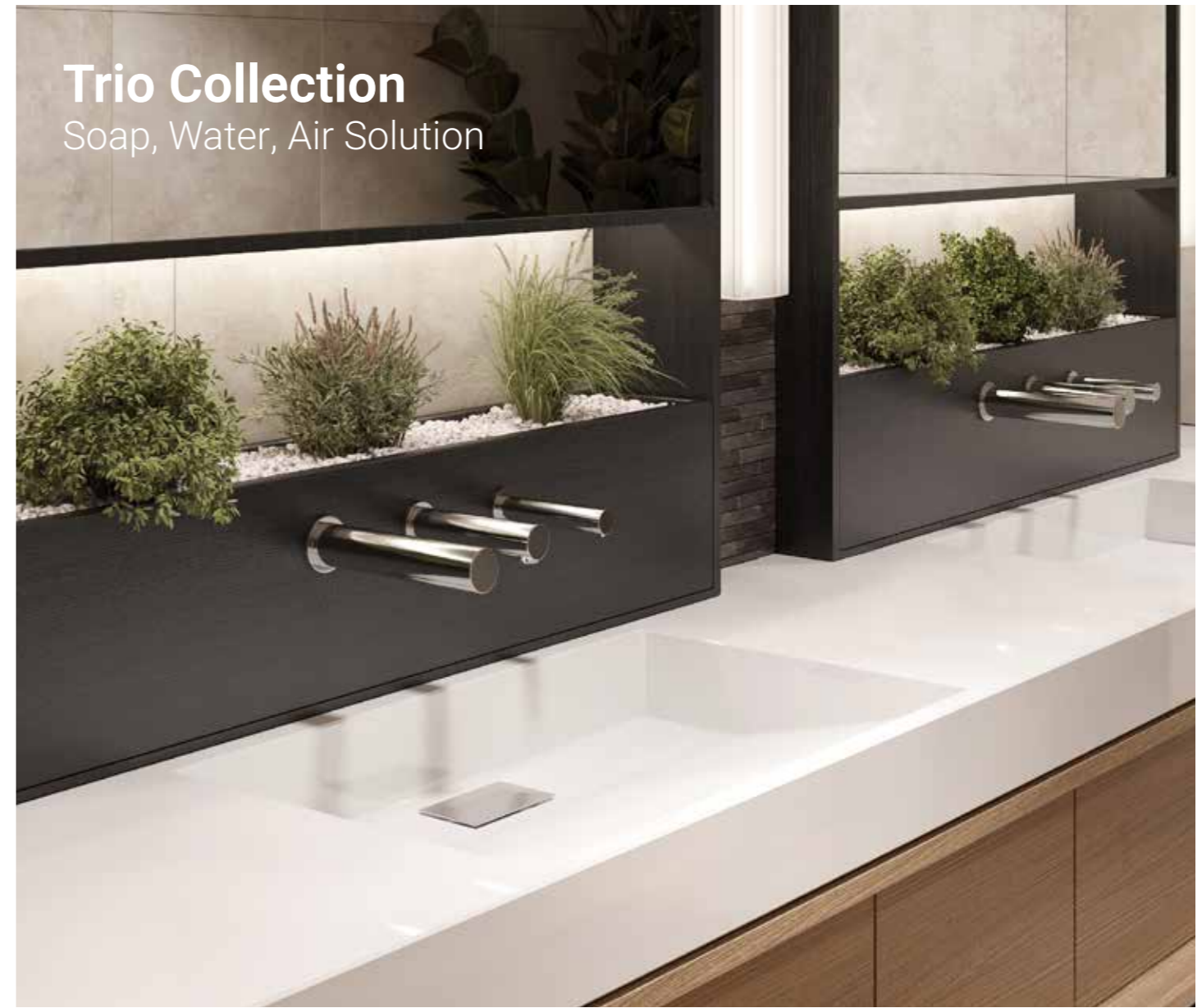


SWAR – Mirrored Wash Stations



SWAR TV

The SWAR TV is a lockable, all-in-one sanitary cabinet with a sleek mirrored front and concealed screen, offering a refined, hygienic solution for modern washrooms. This mirrored wash station with TV integrates a touch-free hand dryer, faucet, soap dispenser, and paper option, all operated by infrared sensors with LED indicators for intuitive use. The built-in thermostatic mixer ensures optimal water temperature, while remote controls allow easy customization of soap dosage, LED colors, soap level indicator, and more. Ideal for high-traffic spaces, the SWAR TV promotes cleanliness, conserves resources, and enhances washroom aesthetics, making it perfect for shopping malls, hotels, airports, and more.



Trio Collection
Soap, Water, Air Solution

SWAR

The SWAR is a secure, all-in-one sanitary cabinet with a sleek mirrored front, delivering a sophisticated, hygienic solution for modern washrooms. SWAR seamlessly integrates touch-free soap, water, air, and paper components, all activated by infrared sensors with LED indicators for easy, intuitive use. A built-in thermostatic mixer maintains the perfect water temperature, while remote controls enable complete customization of LED colors, soap dosage, and other settings. Available in customizable sizes, components, finishes, and soap level indicator, the SWAR is perfect for high-traffic spaces, enhancing cleanliness, increasing sustainability, and elevating washroom aesthetics for shopping malls, hotels, airports, and more.



TUBULAR TRIO

Stern's Touch-Free Soap, Water, Air Trio brings a seamless, hygienic experience to public washrooms, designed for style and efficiency. Featuring an IR sensor-operated soap dispenser, faucet, and high-speed hand dryer. Ideal for high-traffic spaces, it drastically reduces water usage, prevents cross-contamination with touch-free operation, and keeps counters and floors clean by minimizing drips. This fully automated system offers an elegant, all-in-one solution for a modern washroom experience.

WC / Urinals Flush Valves



NOBLE 2032

The touch-free electronic flush valve combines elegance with durability, featuring a vandal-resistant Stainless Steel AISI 316 cover. Its advanced infrared sensor with an auto-adjusting detection range ensures precise operation, while the manual override button, or piezo button, and anti-block mechanism adds reliability. ADA compliant and powered by a transformer or 9V battery, Noble 2032 flush valve adapts to any setting with remote-controlled adjustments for flush duration and other settings.

Ideal for high-design spaces, it provides a hygienic, water-saving solution, dual-flush system. For shorter use (0.8 gallons/3 liters), when the user spends less than a minute in front of the sensor, a half flush is triggered; otherwise, a full flush is activated (1.2 gallons/4.5 liters) for longer occupancy. Perfect for environments from upscale commercial settings to educational institutions.



Shower Panels



NEPTUNE AND NEPTUNE 1000T

The touch-free electronic shower panel series offers two sophisticated, hygienic solutions tailored for modern washrooms. Both models feature an elegant aluminum panel, easy access battery box, non-return valve, and a vandal-resistant shower head with a 2.4 GPM/9 LPM flow restrictor to conserve water. Each model operates via an infrared sensor, activating only when a user steps within range, and includes adjustable settings for sensor range, security time, and delay, all controlled remotely.

The Neptune Shower Panel 1000T includes a thermostatic mixer and a 100.4°F/38°C thermostop for precise temperature control, ideal for high-traffic areas where consistent water temperature is essential. The Neptune Shower Panel maintains core functionality with a streamlined design, making it perfect for installations prioritizing ease and water efficiency. Both options are ideal for retrofits, sports facilities, and spas, balancing high quality design with robust, amazing water-saving performance.



PERFECT TIME SHOWER PANELS

The Perfect Time Shower Panel Series offers three distinct models designed to enhance modern washrooms with sleek functionality and user-friendly design. Each model features an aluminum panel, a vandal-resistant shower head with a 2.4 GPM/9 LPM flow restrictor, and an intuitive piezo button for effortless activation.

- Perfect Time Shower Panel B / E: The essential model, ideal for both indoor and outdoor use, activates a 2-minute water flow with a single touch, making it perfect for high-traffic settings.

- Perfect Time Shower Panel 1000 T: Adds a thermostatic mixer with a 100.4°F/38°C safety stop, ensuring consistent water temperature—ideal for spaces where comfort and safety are paramount, such as healthcare facilities and spas.

- Perfect Time Shower Panel 1000 T with Hand Shower: This versatile model includes both a shower head and a hand shower, each operated independently via piezo buttons, offering users enhanced flexibility in spaces like hospitals and resorts.

With options for streamlined or enhanced functionality, the Perfect Time Series blends elegance and practicality, making it a versatile choice for a variety of projects.



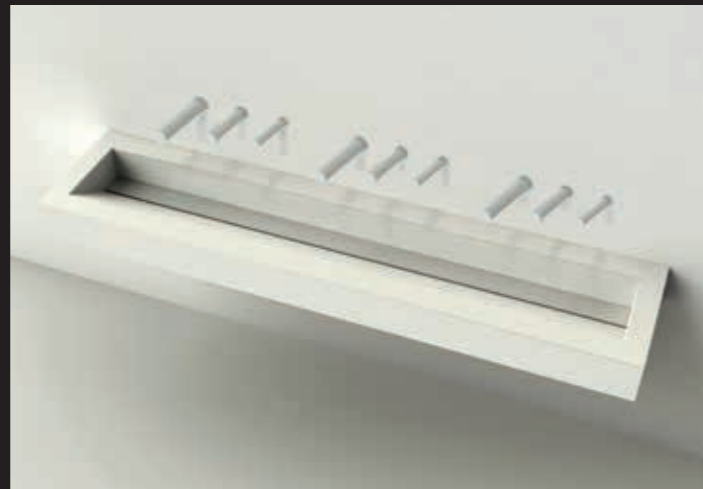
Washbasins

STERN CONTINUOUS WASH TROUGH

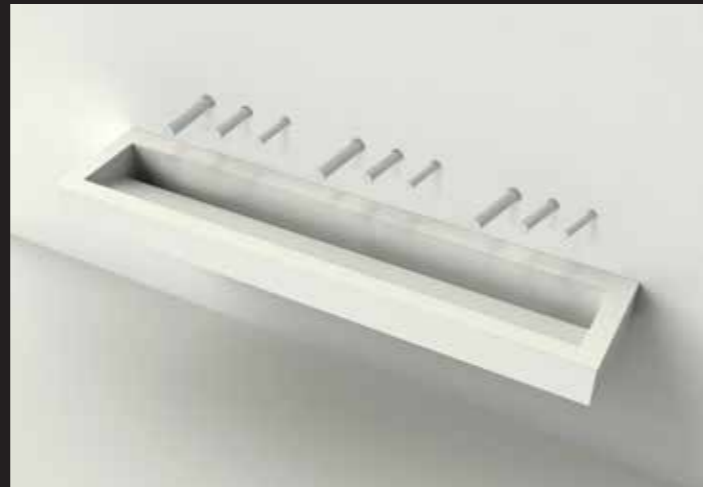
The Stern Continuous Washbasin Collection is a sleek, wall-mounted trough sink designed for high-traffic commercial spaces, from offices and retail environments to schools and public buildings. Constructed from a durable blend of gel coat and aluminum oxide, these non-porous, stain-resistant basins are easy to clean and maintain, with concealed drainage for a seamless appearance. Available in models Ava and Lagoon, and a classic snow white finish, with additional color options upon request, this modern design adapts to diverse aesthetic needs.

The washtrough pairs well with SWAR – mirrored wash station and the touchless wall-mounted faucets, soap dispensers, and hand dryers for the complete look. Ava and Lagoon can be customized to lengths from 35 inches/90 cm to 165 inches/420 cm to fit project specifications, with a depth of 16 inches/40 cm, ensuring both functionality and elegance in busy washroom settings.

AVA



LAGOON



STERN ENGINEERING LTD.

777 Passaic Avenue
Clifton NJ, 07012
Tel: +1.973.773.8011

86 Lackawanna Ave, Suite 315
Woodland Park, NJ 07424

info@sternfaucets.com
www.sternfaucets.com
www.sternfaucets.us
www.sternfaucets.es